



Sarah Wally | Executive Director
Richmond Main Street Initiative
Revitalizing Historic Downtown Richmond

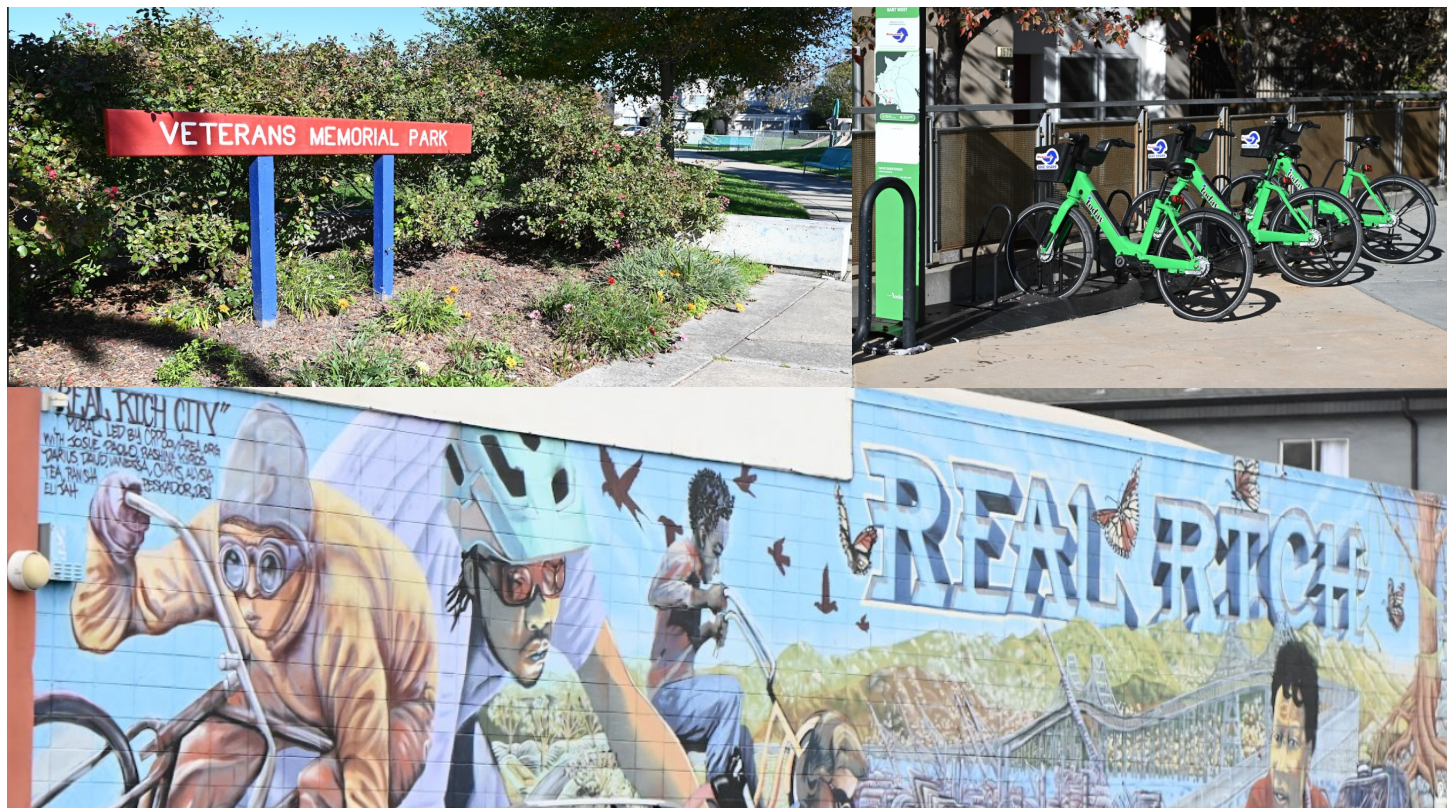
1600 Nevin Plaza, Richmond, CA 94801
 at the Richmond BART Station Plaza
www.richmondmainstreetinitiative.org
director@richmondmainstreet.org
 O: (510) 236-4049 / Cell: (415) 264-4624



RICHMOND MAIN STREET

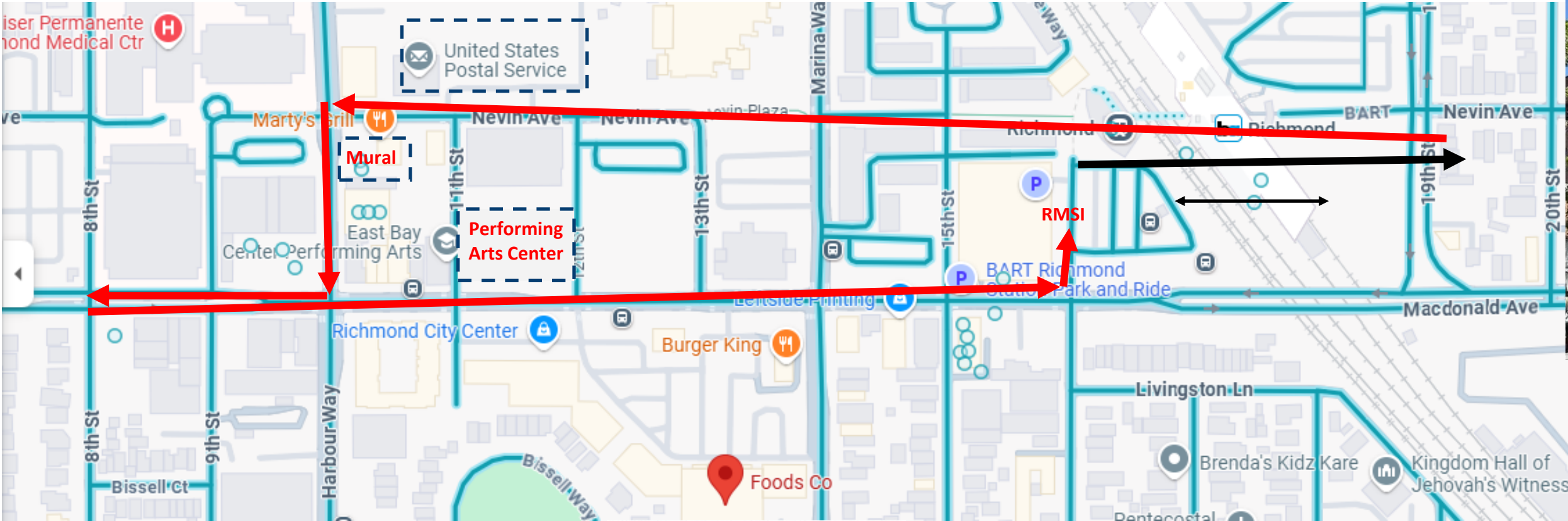
RICHMOND, CALIFORNIA

May 6, 2025



Downtown Richmond Neighborhood Walking Tour (Partial)

Features of the Downtown Neighborhood:
Centrally Located, Live, Work, Socialize, Recreate, Educate, Shop,



- ♦ RMSI Office
- ♦ Transit Village: BART, AC Transit, Amtrak, Ferry, Bicycles, Taxi
- ♦ Murals at BART
- ♦ 19th Street Transit Entrance
- ♦ Signage and Wayfinding – City Hall, Auditorium, Civic Center
- ♦ History Markers in Ground (at Plaza)
- ♦ Metro Walk 1, and Park – Nevin Avenue toward Kaiser
- ♦ Social Security Building
- ♦ Post Office built in 1938
- ♦ Iron Triangle Mural on wall at Marty's Grill
- ♦ Carquinez Building, built 1926, 75 rooms and retail below
- ♦ Kaiser Permanente Campus
- ♦ Market Square Mall
- ♦ Wells Fargo Bank, 1927 originally American Trust
- ♦ Community Park
- ♦ Dollar Sign (9th and Macdonald)
- ♦ Mechanics Bank Building, built 1920 Greek Revival
- ♦ History Markers, Corner of 9th and 8th and Macdonald
- ♦ Bicycle Boulevard – 8th Street – Goes to the Greenway
- ♦ Apartments and Housing
- ♦ East Bay Center of Performing Arts Center Built 1923
- ♦ Site for Future Housing and Retail Development 11th – 13th
- ♦ Shopping Center – Supermarket, Restaurants, Renovating
- ♦ Leftside Printing, Event Center, Outdoor Sports Venue
- ♦ The LOT, Downtown Richmond Food Court
- ♦ Rich City Rides
- ♦ CoBiz
- ♦ Gateway Underpass built in 1909, opened Downtown to the Civic Center District



- ♦ Health Care: Kaiser, Life Long, Dental
- ♦ Single Family Homes, Affordable Apartments, Senior Housing
- ♦ Future Housing and Commercial Developments
- ♦ Supermarket and Convenience Stores
- ♦ Parks, Nevin, Veterans, Metro Walk, Community Garden
- ♦ Public Transit Village; Bart, Ferry, Bus, Amtrak, Bike, Taxi
- ♦ Offices and Work Spaces
- ♦ Parking
- ♦ Walking Paths
- ♦ Arts Corridor
- ♦ Post Office
- ♦ Retail Stores and Goods
- ♦ Entertainment
- ♦ Youth Programs
- ♦ Schools
- ♦ Food and Dining Options
- ♦ Music Venues
- ♦ Museum
- ♦ Recreation Facilities
- ♦ Community Center
- ♦ Bicycle Boulevard – Greenway

